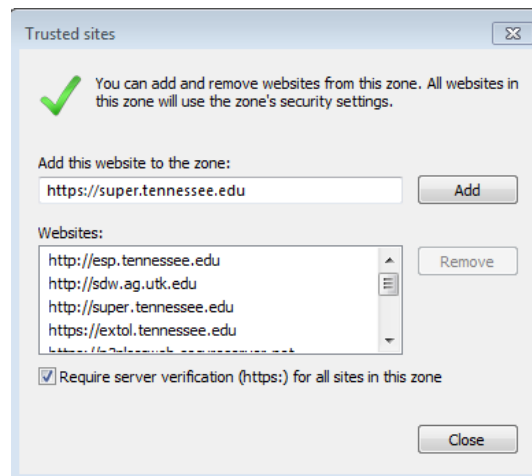
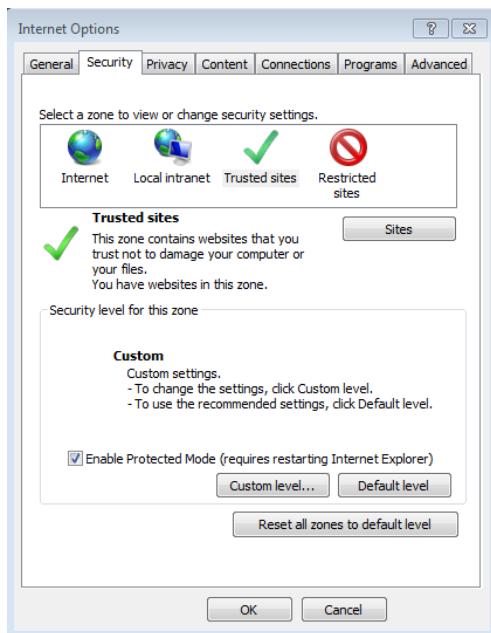


Trusted Sites

If the screen flashes quickly and returns to the login screen after an attempt to login, SUPER will need to be added the trusted sites of Internet Explorer.

To add SUPER to the Trusted Sites: click on Tools > Internet Options. On Internet Options click on the Security tab and then click on Trusted Sites. On Trusted Sites click the Sites button. The SUPER web site, <https://super.tennessee.edu> should be in the box. Click Add to add it to the main list and then, Done to close that window. You should be back to the Trusted Sites page. Click the box that says Enable Protected Mode and then the Close button. Close and reopen Internet Explorer and try logging in again.



Compatibility View Settings

If adding SUPER to your Trusted sites does not work then the Compatibility View Settings will need to be set. Click on Tools > Compatibility View Settings to bring up the dialog box. Add tennessee.edu and utk.edu into Websites you've added to Compatibility View. Check the Display intranet sites in Compatibility View box. Click the Close button. Close and reopen Internet Explorer and try logging in again.

